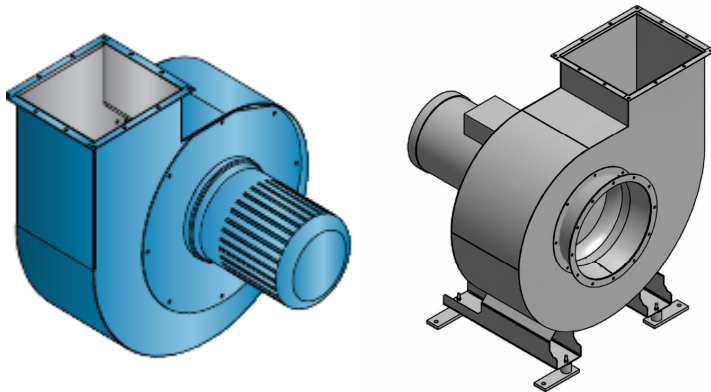
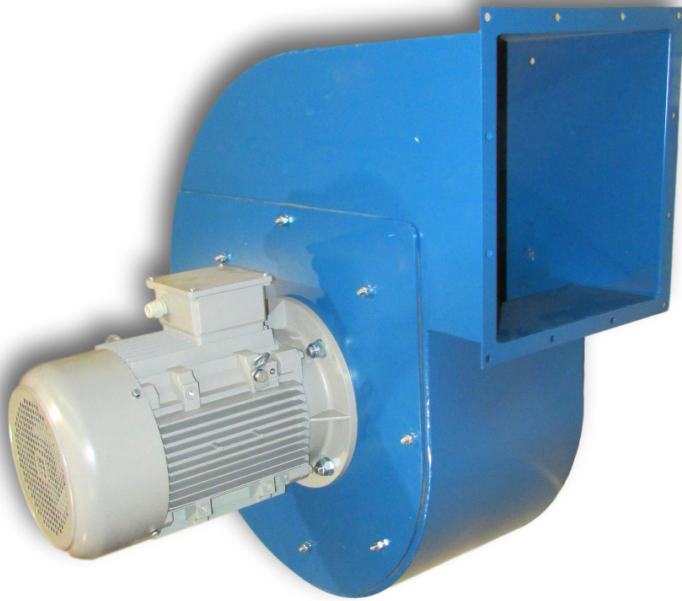
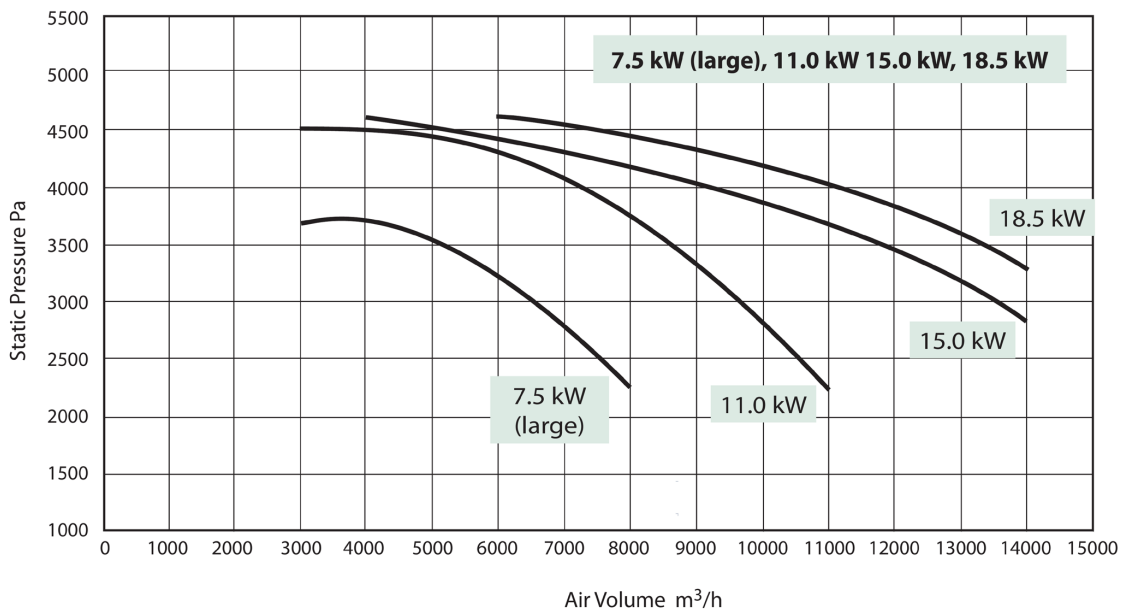
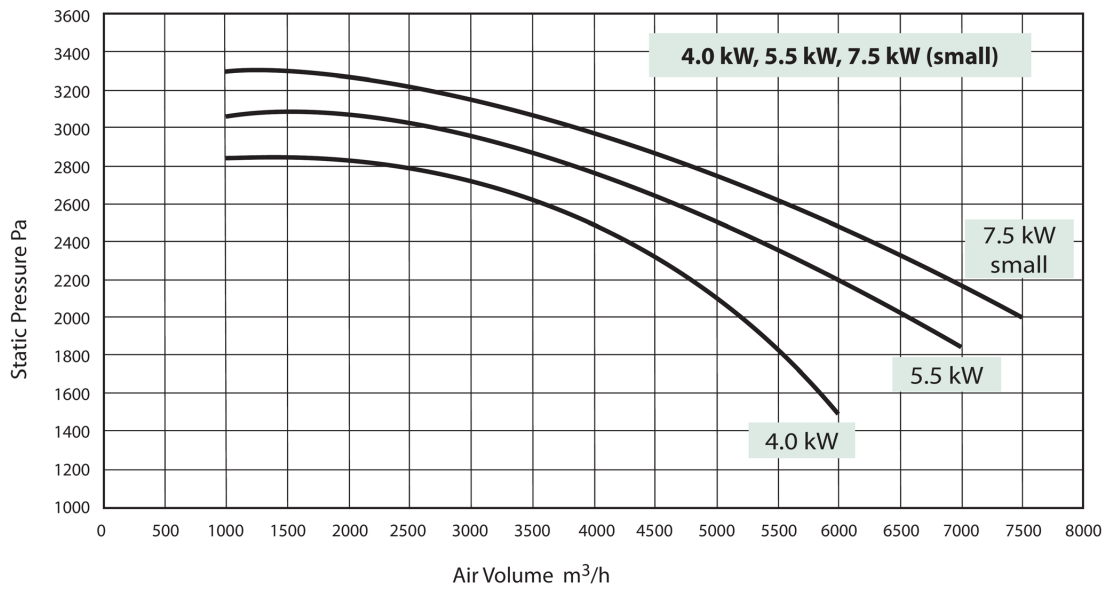
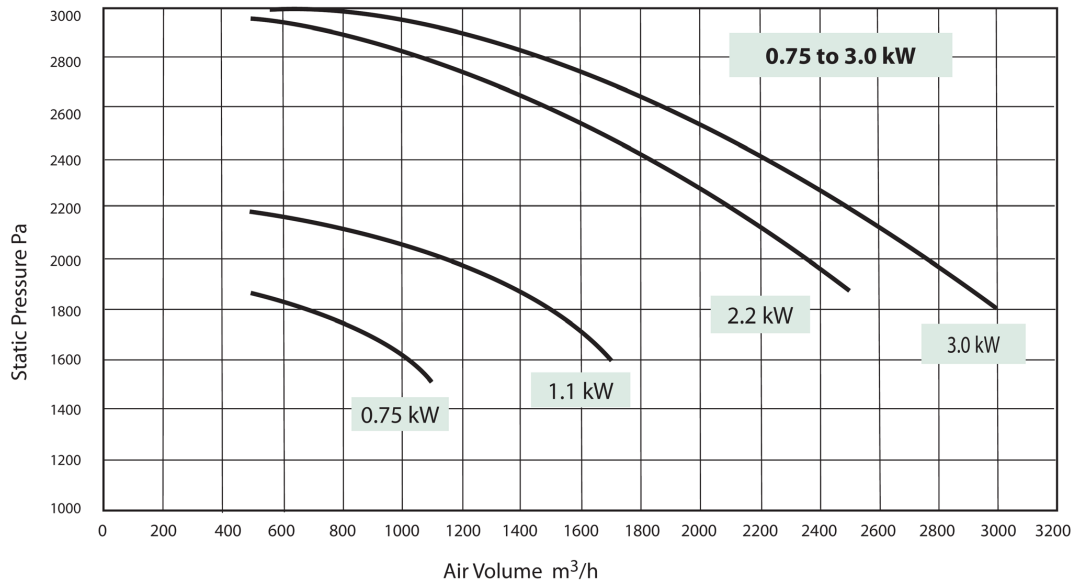


NEDERMAN NF Radial fan



NF is a series of industrial radial fans. Their main application is in extraction systems used in stationary dust collectors produced by NEDERMAN. Usually the NF Radial fan is used for handling of clean air, sucking the air through the filter elements of a dust collector, thus it is located on the clean air side of a dust collector. Fans NF should not be used for gases containing aggressive substances or toxic.

NEDERMAN NF Radial fan equipped with motors of power rating in the range from 0.75 kW up to 18.5 kW. The diagrams presenting fan operational parameters (performance) are shown in diagrams in below. Maximum air flow range is up to 14 000 m³ /h.



Allowable pressures and temperature ranges for NF fan :

NF fan version	Maximum positive pressure [Pa]	Maximum negative pressure [Pa]	Temperature of gas flowing [°C]	Ambient temperature [°C]
Standard	max. 4500	-	-20 ÷ +80	-20 ÷ +40

Limitation for transported materials

Limits for material (wood)

Type of impeller	Maximum concentration of dust [g/m ³]	Maximum particle size (wood) [mm]
R	< 5	< 2×2×2

Limits of particle size at speed 20 [m/s]

Type of impeller	Quantity of material [kg/h]	
	Diameter of duct - 100 [mm]	Diameter of duct - 500 [mm]
R	< 2.5	< 70

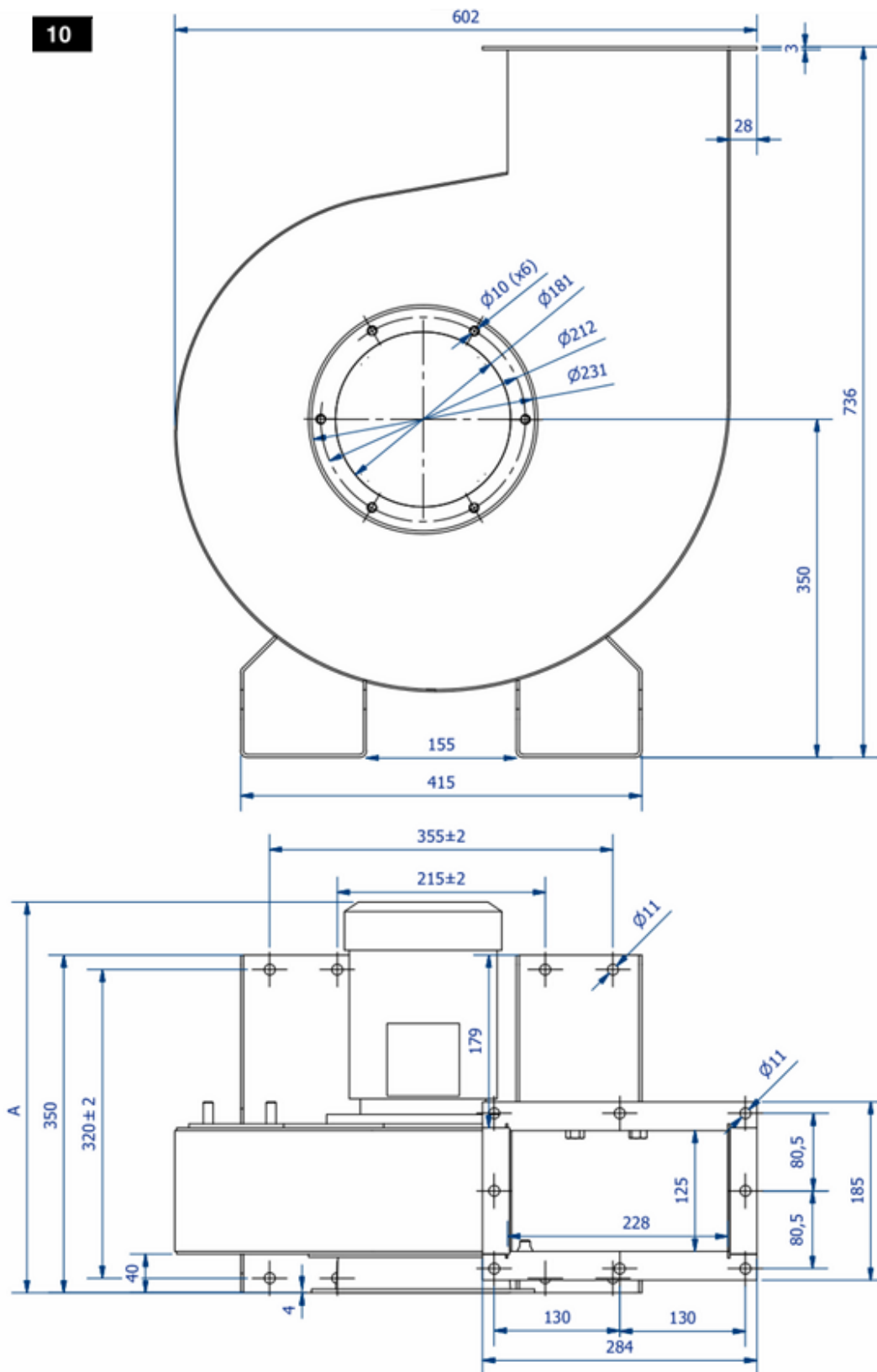
Dimensions and weights of fans NF type:

Fan motor power [kW]	Dimension A* [mm]	Figure number	Housing type	Diagram working on the figure number	Weight [kg]
0,75	409	10	31363	5	43
1,1	443	10	31363	5	45
2,2	501	10	31363	5	51
3,0	522	10	31363	5	56
4,0	634	11	31364	6	78
5,5	671	11	31364	6	92
7,5 (S)**	671	11	31364	6	97
7,5 (L)**	835	12	31366	7	147
11,0	940	12	31366	7	179
15,0	940	12	31366	7	192
18,5	940	12	31366	7	210

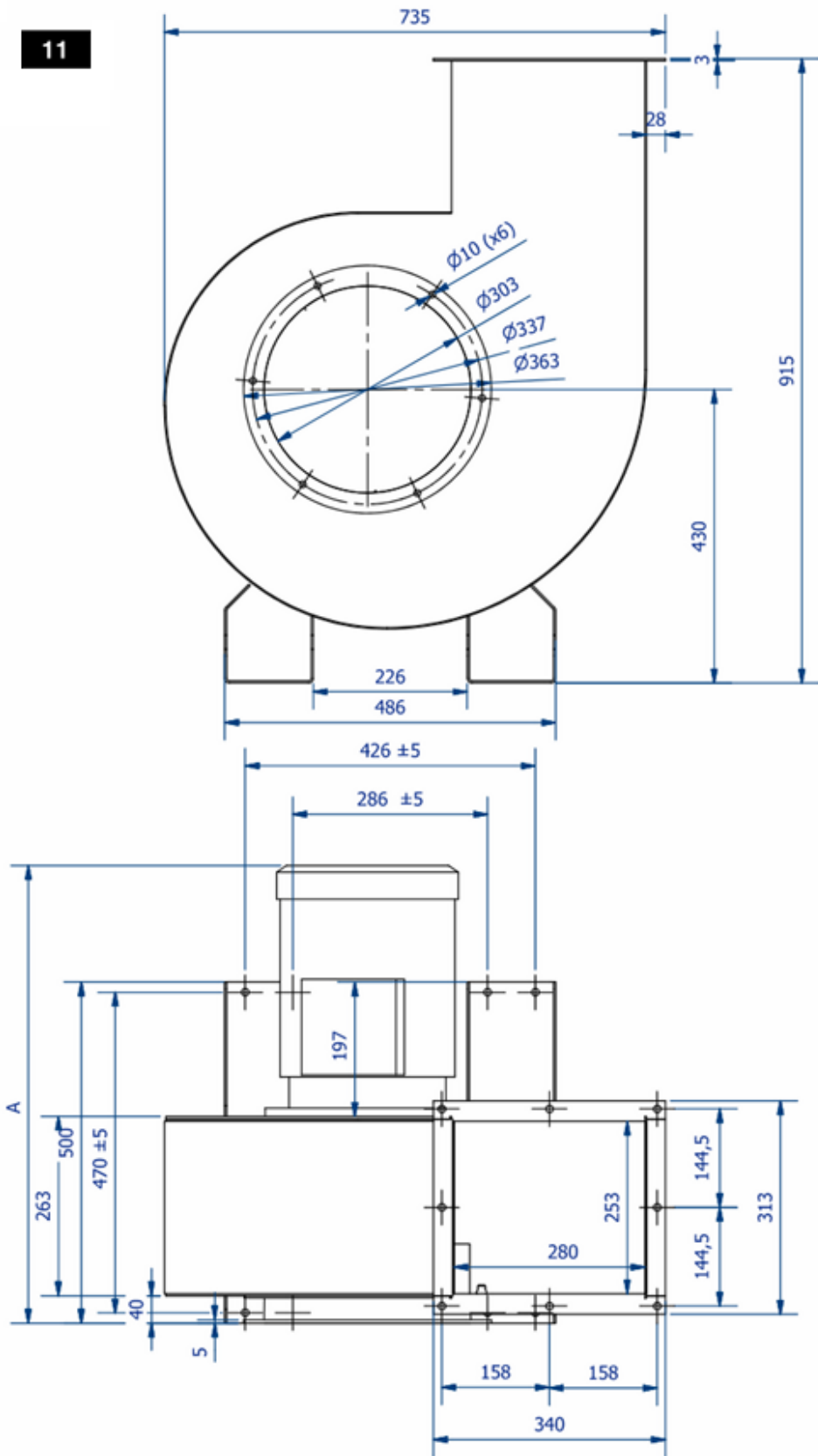
* - dimension dependent on power / the engine type. See Figures 10, 11 and 12

** - two quantities of the fan with an engine power 7,5 kW

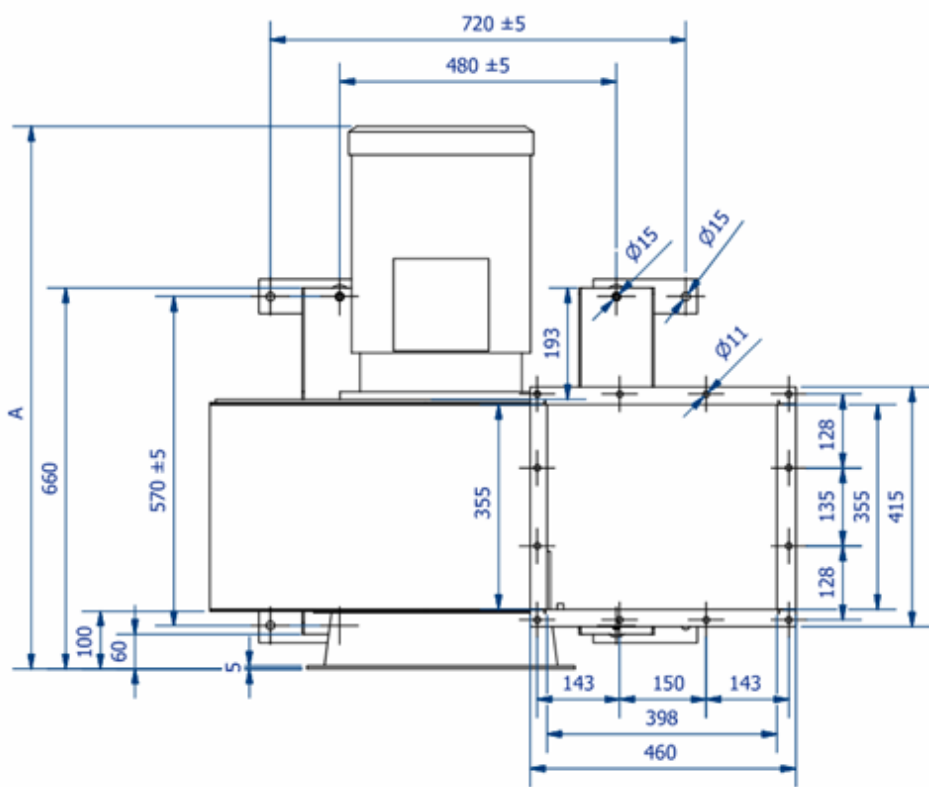
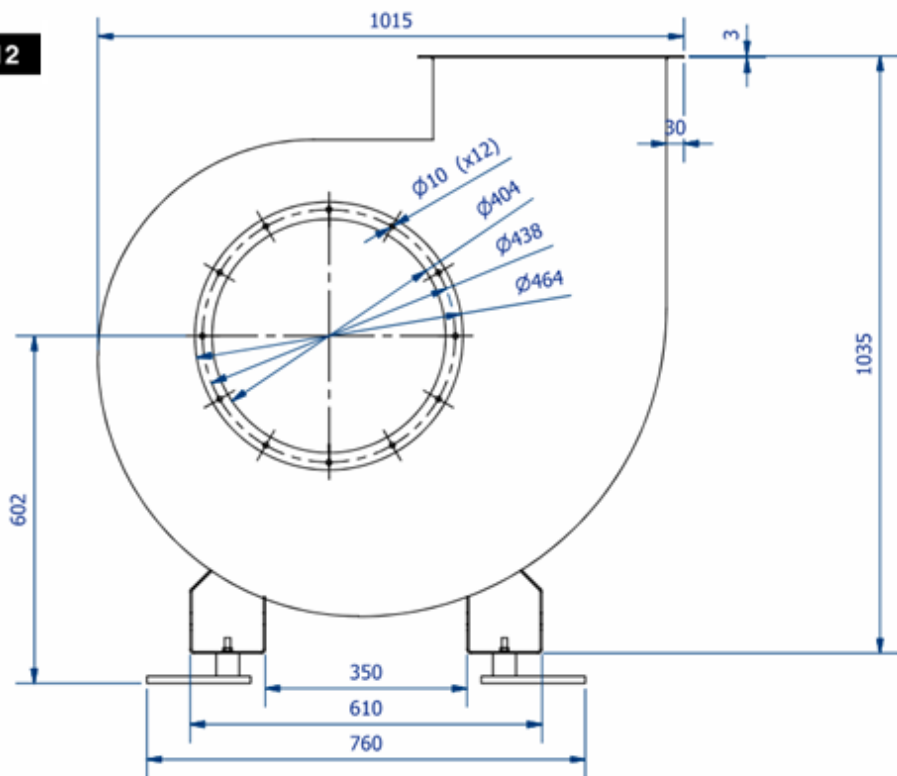
10



11



12



NF fan - noise level:

Fan motor power [kW]	Noise level dB(A)*	
	with silencer	without silencer
0,75	68	82
1,1	68	82
2,2	75	83
3,0	77	85
4,0	77	85
5,5	79	85
7,5 S	81	85
7,5 L	82	85
11	84	87
15	84	90
18,5	85	94

* Max. value in a distance of 1 m and a height of 1 m; one reflection plane.