

MJC, mini cartridge dust collector

Compact reverse jet tubular cartridge filters



Suitable for many different applications that generate light to medium volumes of any dust. The MJC Mini range of compact reverse jet tubular cartridge filters was developed for continuous operation in industrial process filtration and dust collection applications – incorporating Nederman's patented UniClean cartridge technology for maximum cleaning efficiency and extended life.

Key features

- Standard filter range from 4 to 40m² (43-430ft²)
- Robust weatherproof fully welded steel construction
- Space saving integral fans from 0.75 to 3.0kW (1-4hp)
- 4.0kW (5hp) higher pressure fan available
- ATEX compliant features for St1, St2 and St3 dusts
- Integral pre-separation chamber, cross flow / down flow inlet air pattern
- Modular interchangeable assemblies

Typical dust control and process applications:

- **Materials handling – conveying, screening, sieving, mixing, bin/silo venting**
- **Shot, sand and bead blasting**
- **Shot, sand and bead blasting**
- **Welding and cutting processes**
- **Chemical, plastics and pharmaceutical powders**

Product name	MJC, mini cartridge dust collector
Compressed air requirement	5 to 5,5 bar
Installation	[Indoor], [Outdoor]
Material	Robust construction in 2.5 mm thick steel, fully welded and painted
Suitable for combustible dust	True
Filter cleaning method	[PulseJet]
Application	[dust], [fumes]
Working pressure (kPa)	-8,0 to 2,0
Dustbin volume (l)	75 or 150 l
Filter Area (m²)	4 to 40
Capacity (max airflow m³/h)	3600
Operating Temperature	-20 to 80 Dec. C
Filter type	[cartridge]
Note	Open base filter without hopper and collection bin



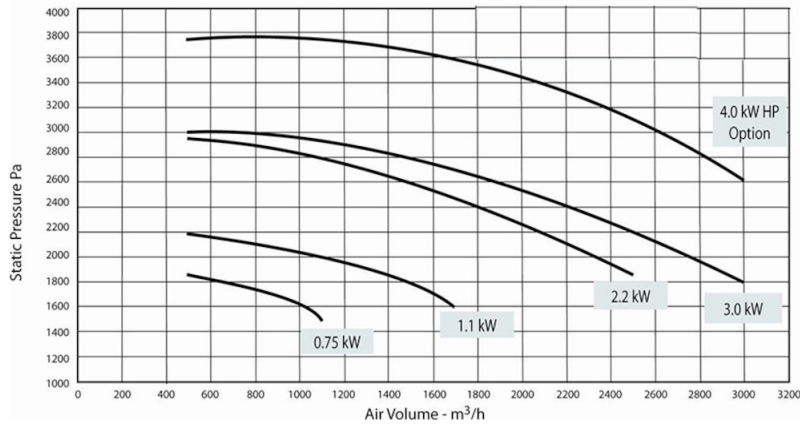
Fumes Dust

MJC, mini cartridge dust collector

Description	Number of filter elements	[model]
MJC Mini 4/22/21	2	MJCMini4/22/21*
MJC Mini 8/40/21	2	MJCMini8/40/21*
MJC Mini 9/22/22	4	MJCMini9/22/22
MJC Mini 13/22/32	6	MJCMini13/22/32
MJC Mini 16/40/22	4	MJCMini16/40/22
MJC Mini 24/40/32	6	MJCMini24/40/32
MJC Mini 26/66/22	4	MJCMini26/66/22
MJC Mini 40/66/32	6	MJCMini40/66/32

**Open base filter without hopper and collection bin*

MJC, mini cartridge dust collector



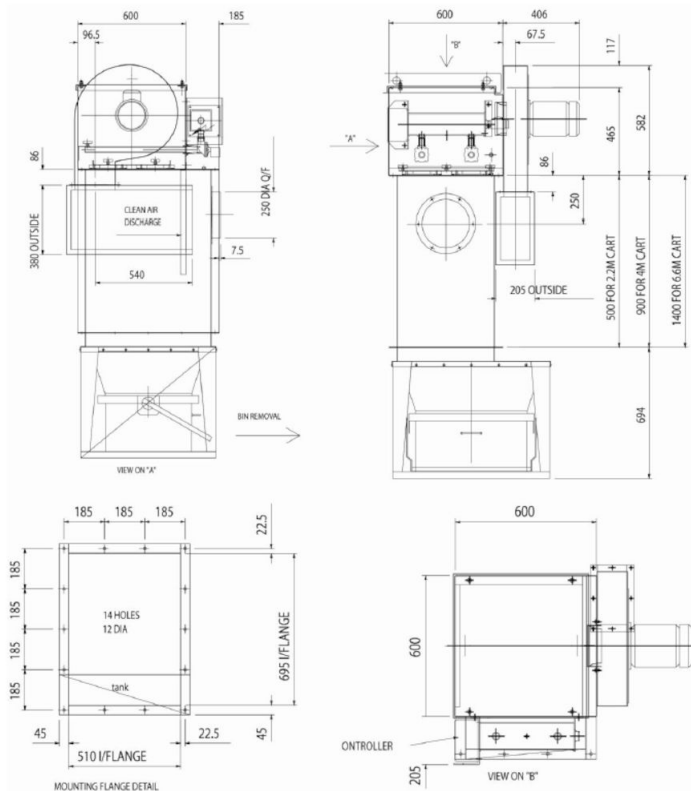
MJC Mini range fan performance, with open outlet, at running speed 2900/min.

Electrical Supply: MJC Mini 4/22/21 and 8/40/21 with no fan: -110v single phase 50 or 60Hz.

MJC Mini, all other models, with no fan: - 110 or 220v single phase 50 or 60Hz.

Fan: add 380/415v 3-phase for any fan or 220/240v single phase supply for 0.75, 1.1 or 2.2kW fan only.

MJC, mini cartridge dust collector



MJC Mini Planning-in Data

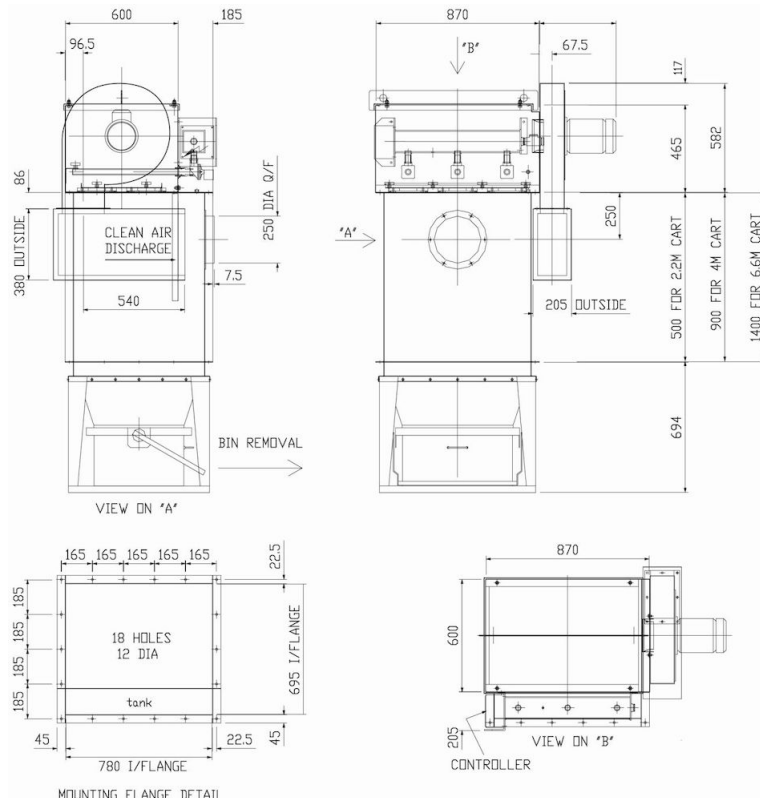
MJC Mini 9/22/22, 16/40/22 and 26/66/22 are available as insertable or open based venting filters, with or without fan assistance. Both units use the same mounting flange illustrated here.

A hopper with 75 litre quick-release bin is available.

The unit can be assembled with bin removal from front or rear.

The fan may be positioned with an upward discharge if required.

MJC, mini cartridge dust collector



MJC Mini Planning-in Data

The MJC Mini 13/22/32, 24/40/32 and 40/66/32 are available as insertable or open based venting filters, with or without fan assistance. Both units use the same mounting flange illustrated here.

They may also be specified with a conventional hopper with 75 litre (illustrated) or 150 litre quick-release bin. The units may be assembled with bin removal from front or rear.

The fan may be positioned with an upward discharge if required.